

ELMEF TESTING & CALIBRATION LABORATORIES PRIVATE LIMITED

Laboratory: RH-8, County Walk, Near Shishukunj International School, Village-Jhalaria, Indore-452016



CIN: U7499MP2016PTC040686

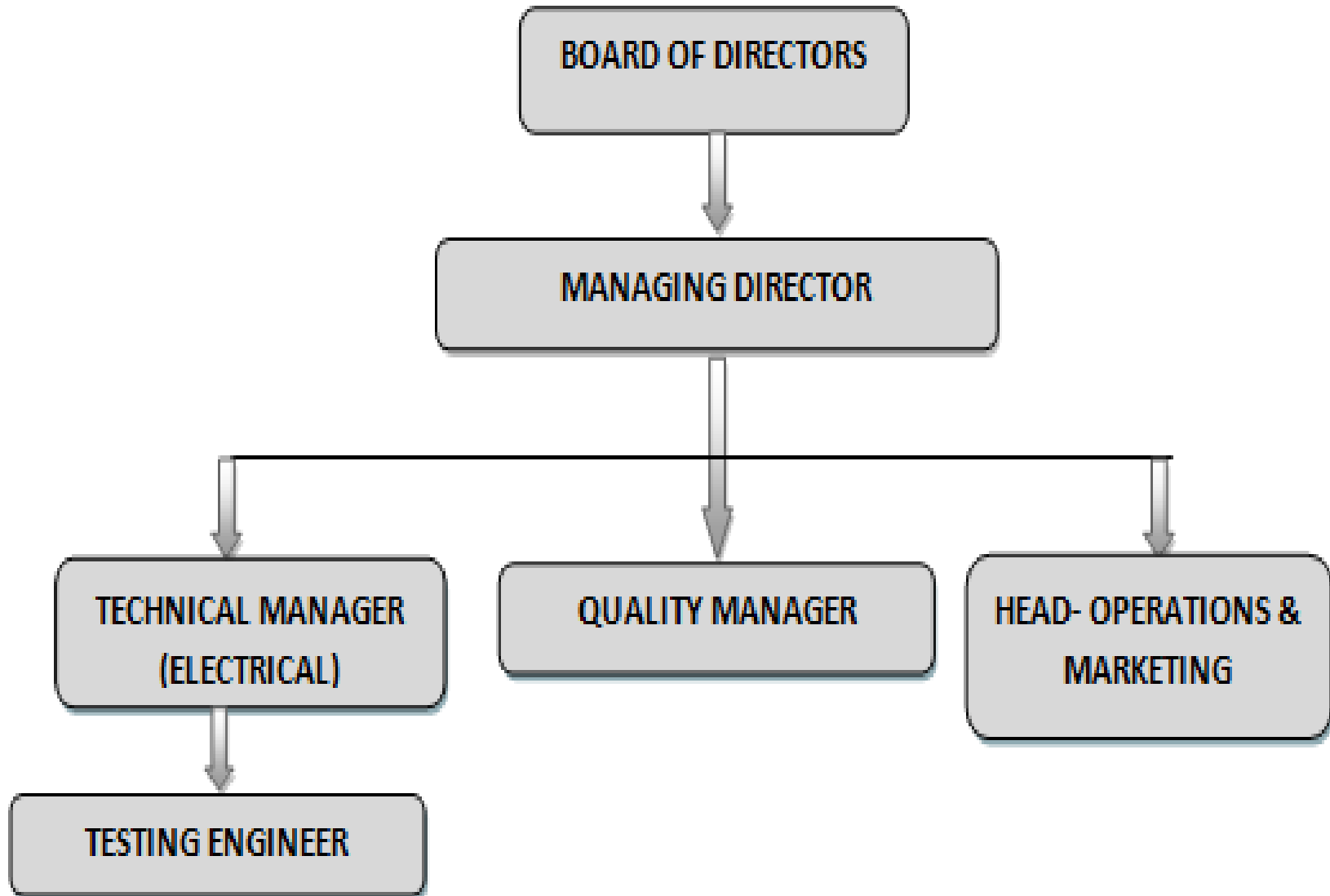
Established on 5th May 2016

INTRODUCTION

- ❑ “ELMEF” stands for Electrical Mechanical Electronics & Food Testing & Calibration Laboratory.
- ❑ At present we have Electrical testing facility and all other disciplines are proposed for future expansion.
- ❑ It’s a Permanent Third Party Testing Facility for Cables & Wiring Accessories like LT cables, conductors & insulating conduits.
- ❑ ELMEF complies with all the clauses of IS/ ISO/ IEC 17025: 2005.
- ❑ Laboratory’s final assessment has been successfully conducted and accreditation is in process.



ORGANIZATION STRUCTURE



DESCRIPTION OF KEY PERSONS OF THE LABORATORY

❑ **Managing Director-** Mrs. Madhvi Sharma

❑ **Head-Operations & Marketing:** Mr. Prateek Sharma

Qualification: B.Tech in Electronics & Communication Engineering,
MBA in Marketing

Experience: 7 years

❑ **Technical Manager & Quality Manager:** Ms. Surabhi
Chauhan

Qualification: B.Tech in Electrical Engineering, MBA in Business
Development & Marketing

Experience: 7 years

❑ **Testing Engineer:** Mr. Lokesh Keshwal

Qualification: B.E in EEE

Experience: Fresher



SCOPE OF ACCREDITATION

IS 694:2010

Polyvinyl Chloride Insulated unsheathed and sheathed cables/cords with rigid and flexible conductor for rated voltages up to and including 1100 Volts

IS 1554(Part-1): 1988

PVC insulated (Heavy Duty) Electric Cables

IS 7098(Part-1): 1988

Cross Linked Polyethylene Insulated, PVC Sheathed cables

IS 14255:1995

Aerial Bunched Cables for working voltages up to and Including 1100Volts

IS 398(Part-1):1996

Aluminum conductors for overhead transmission purposes Aluminum stranded conductors

IS 398(Part-2):1996

Aluminum conductors for overhead transmission purposes-Aluminum Conductors, Galvanized Steel Reinforced.



.....to be continued

SCOPE OF ACCREDITATION

In continuation.....

IS 398(Part-4):1996

Aluminum conductors for overhead transmission purposes-Aluminum Alloy Stranded Conductors (Aluminum-Magnesium-Silicon Type)

IS 398(Part-5):1996

Aluminum conductors for overhead transmission Aluminum Conductors-Galvanized Steel Reinforced-For extra High Voltage

IS 9537 (Part-1):1980

Conduit for electrical Installations- General Requirements

IS 9537 (Part-3): 1983

Conduit for electrical Installations- Rigid plain Conduits of Insulating Materials (plain & socket end).

IS 191:2007 & IS: 440:1964

Copper Specification & Method of Chemical Analysis of Copper



ACTIVITIES OF THE LAB

- ❑ Testing of Electrical products as per the scope of accreditation.
- ❑ Training- Provide practical trainings to the specialized Quality persons of the industry for pre & post manufacturing Quality checks. Also provide theoretical as well as applied knowledge to the fresh Engineering interns with a wide exposure of pioneering technology and techniques being used in the Industry. We also give customized training programs to the industry persons and students as per their requirement.
- ❑ We organize ILC/PT programs for outside laboratories.
- ❑ We have a team of qualified industry experts which can give training for documentation related to NABL, BIS & ISO to the Technical/Quality persons of the industry.



DISTINCTIVE COMPETENCE

- ❑ ELMEF has a state-of-art testing facility for two most futuristic category of cables: FR (Flame Retardant) & FR-LSH (Flame Retardant-Low Smoke Halogen) cables. The Laboratory carries out fire reaction tests on electric cables and all polymeric materials as per IS specification.
- ❑ ELMEF is the first laboratory to introduce PVC Conduit Testing in Indore as per IS 9537 (Part-1) & IS 9537 (Part-3). The laboratory tests all Mechanical & Electrical properties of PVC conduit like compression test, insulation resistance & electrical strength, etc.



THANK YOU FOR
YOUR PRECIOUS
TIME.

COME VISIT US!

